

More security and convenience!

systemel GmbH stands for first-class advice, well thought-out planning and smooth implementation of demanding projects with more than 20 years of experience in the field of telephone systems.

We install, configure and maintain all Alcatel-Lucent Omni Voice and Data products.

We also offer some useful applications:

With the **sys-Alarmserver** you can reach up to 7000 IP Touch devices at the same time.

With **sys-time** you can also use the phone as a time tracking terminal.

Find out more about our products at www.systemel-software.com

systemel GmbH
+49 (7031) 41 61 68-0
info@systemel.de
www.systemel-software.com

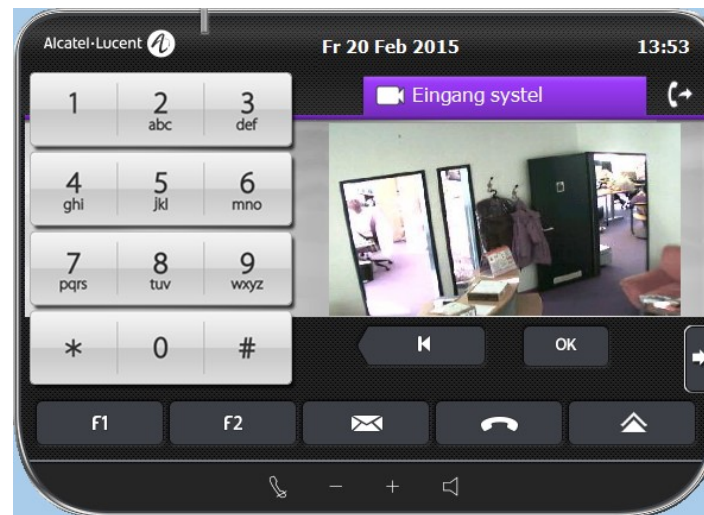


sys-cam

The requirements for security in companies are constantly increasing. IP terminals from the Omni-PCX family can now be connected to any door station (analogue/S0/SIP) and an IP camera.

The camera image is shown on the display before the call is accepted.

The advantage: in contrast to the PC, the end device is always on and therefore always accessible.

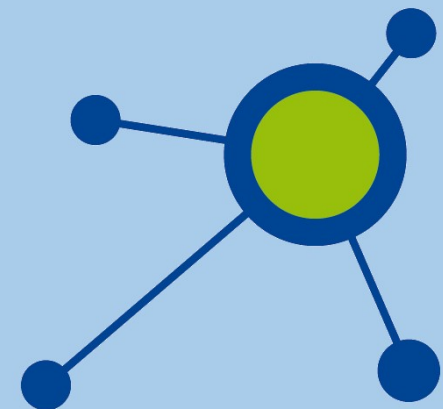


Send us an offer request with the required quantity
to: vertrieb@systemel.de

sys-cam

for Alcatel-Lucent IP-Devices

Camera images on the telephone — see who is at the door



Active observation and opening of a door with display on the IP terminal!

sys-cam—Monitoring entrances made easy!

The connection to the existing system is very easy, the existing intercom (analog/S0/SIP) can still be used. The software couples the intercom station and the camera.

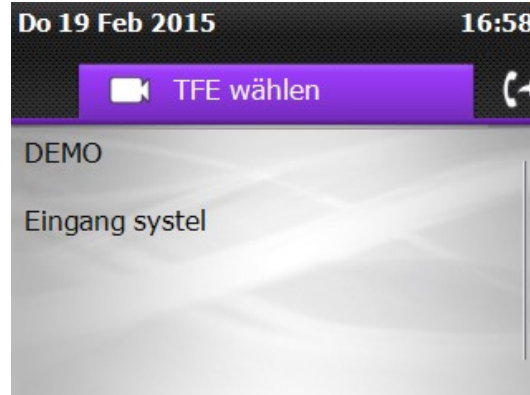
The number of door intercoms is unlimited.

The camera automatically shows what is happening in front of the door (already while the doorbell is ringing).

The display shows the name of the entrance station from which the image is received.

Display and control on the IP Touch

Any entrance station can be connected!



Camera images can also be displayed without active call.

To do this, start the sys-cam application in the menu at any time.

Requirements:

IP-Device 8 - or ALE-Series

IP camera whose image can be displayed in the browser (no stream) e.g. Mobotix, Axis, Behnke, Rocom, and many more.

OpenTouch Advanced REST API License / per end device with camera image

